

SMALL BUSINESS CAPITAL OUTLAYS (CONTINUED)

TYPE OF CAPITAL EXPENDITURES MADE

Percent Purchasing or Leasing During Last Six Months

Type	Current	One Year Ago	Two Years Ago
Vehicles	20	16	17
Equipment	39	34	35
Furniture or Fixtures	12	12	9
Add. Bldgs. or Land	5	4	6
Improved Bldgs. or Land	13	14	13

AMOUNT OF CAPITAL EXPENDITURES MADE

Percent Distribution of Per Firm Expenditures
During the Last Six Months

Amount	Current	One Year Ago	Two Years Ago
\$1 to \$999	4	4	5
\$1,000 to \$4,999	8	7	9
\$5,000 to \$9,999	8	5	4
\$10,000 to \$49,999	19	19	16
\$50,000 to \$99,999	8	6	6
\$100,000 +	10	9	10
No Answer	0	1	0

CAPITAL EXPENDITURE PLANS

Percent Planning a Capital Expenditure During Next Three to Six Months
(Seasonally Adjusted)

	Jan	Feb	Mar	Apr	May	Jun	Jul	Aug	Sep	Oct	Nov	Dec
2008	25	26	25	26	25	26	21	23	21	19	21	17
2009	19	18	16	19	20	17	18	16	18	17	16	18
2010	20	20	19	19	20	19	18	16	19	18	20	21
2011	22	22	24	21	20	21	20	21	20	21	24	24
2012	24	23	22	25	24	21	21	24	21	22	19	20
2013	21	25	25	23	23	23	23	24	25			



SINGLE MOST IMPORTANT PROBLEM

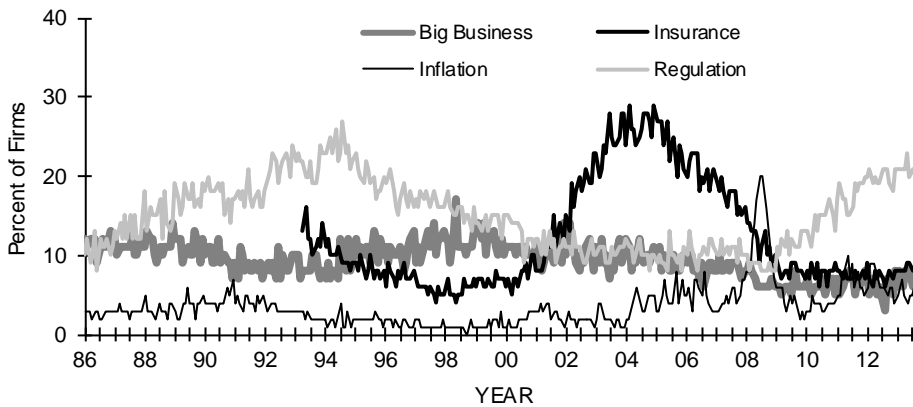
SINGLE MOST IMPORTANT PROBLEM

September 2013

Problem	Current	One Year Ago	Survey High	Survey Low
Taxes	18	21	32	8
Inflation	5	5	41	0
Poor Sales	17	21	34	2
Fin. & Interest Rates	2	2	37	1
Cost of Labor	4	4	9	2
Govt. Reqs. & Red Tape	24	21	27	4
Comp. From Large Bus.	5	7	14	4
Quality of Labor	10	6	24	3
Cost/Avail. of Insurance	8	7	29	4
Other	7	6	31	1

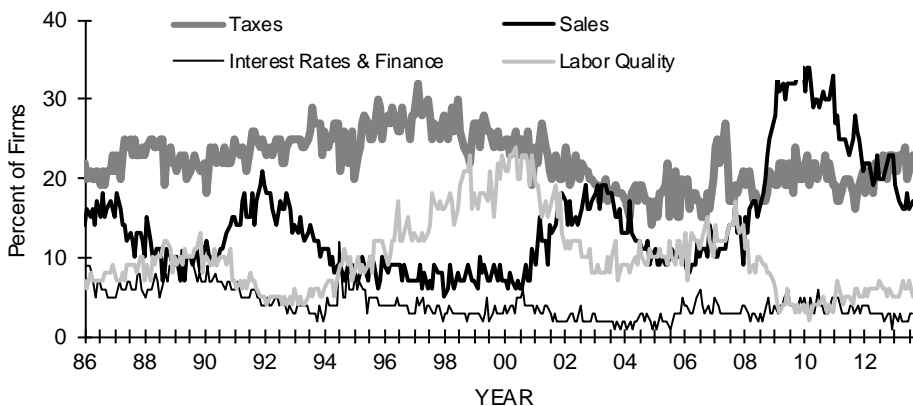
SELECTED SINGLE MOST IMPORTANT PROBLEM

Inflation, Big Business, Insurance and Regulation
January 1986 to September 2013



SELECTED SINGLE MOST IMPORTANT PROBLEM

Taxes, Interest Rates, Sales and Labor Quality
January 1986 to September 2013



SURVEY PROFILE

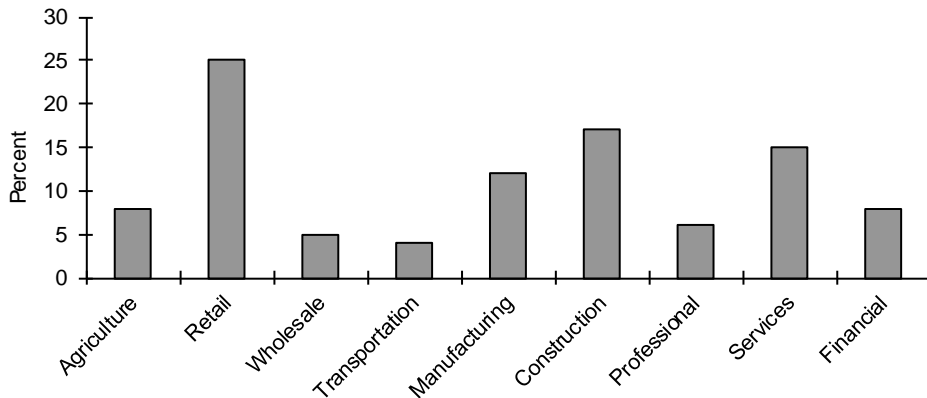
OWNER/MEMBERS PARTICIPATING IN ECONOMIC SURVEY NFIB

Actual Number of Firms

	Jan	Feb	Mar	Apr	May	Jun	Jul	Aug	Sep	Oct	Nov	Dec
2008	1845	700	735	1768	737	703	1827	812	743	1992	826	805
2009	2013	846	867	1794	814	758	1994	882	827	2059	825	830
2010	2114	799	948	2176	823	804	2029	874	849	1910	807	804
2011	2144	774	811	1985	733	766	1817	926	729	2077	781	735
2012	2155	819	757	1817	681	740	1803	736	691	2029	733	648
2013	2033	870	759	1873	715	662	1615	782	773			

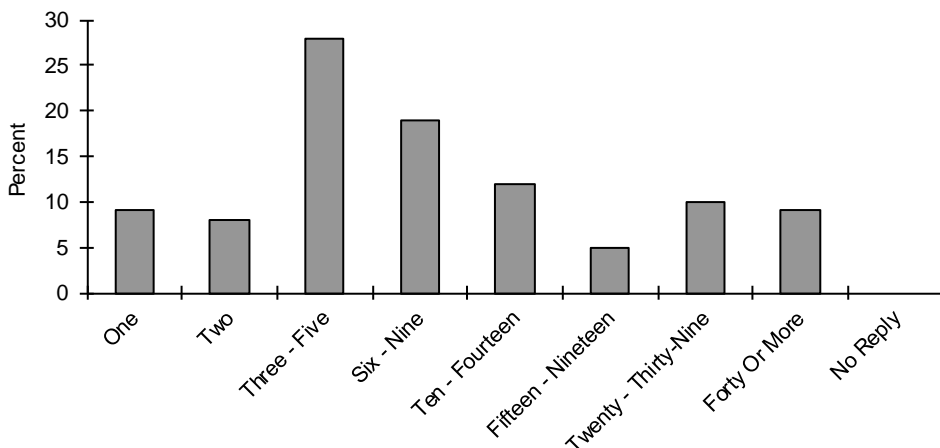
NFIB OWNER/MEMBERS PARTICIPATING IN ECONOMIC SURVEY

Industry of Small Business



NFIB OWNER/MEMBERS PARTICIPATING IN ECONOMIC SURVEY

Number of Full and Part-Time Employees



NFIB RESEARCH FOUNDATION SMALL BUSINESS ECONOMIC SURVEY

SMALL BUSINESS SURVEY QUESTIONS

PAGE IN REPORT

Do you think the next three months will be a good time for small business to expand substantially? Why?	4
About the economy in general, do you think that six months from now general business conditions will be better than they are now, about the same, or worse?	5
Were your net earnings or “income” (after taxes) from your business during the last calendar quarter higher, lower, or about the same as they were for the quarter before?	6
If higher or lower, what is the most important reason?	6
During the last calendar quarter, was your dollar sales volume higher, lower, or about the same as it was for the quarter before?	7
Overall, what do you expect to happen to real volume (number of units) of goods and/or services that you will sell during the next three months?	7
How are your average selling prices compared to three months ago?	8
In the next three months, do you plan to change the average selling prices of your goods and/or services?	8
During the last three months, did the total number of employees in your firm increase, decrease, or stay about the same?	9
If you have filled or attempted to fill any job openings in the past three months, how many qualified applicants were there for the position(s)?	9
Do you have any job openings that you are not able to fill right now?	10
In the next three months, do you expect to increase or decrease the total number of people working for you?	10
Over the past three months, did you change the average employee compensation?	11
Do you plan to change average employee compensation during the next three months?	11



SMALL BUSINESS SURVEY QUESTIONS

PAGE IN REPORT

Are...loans easier or harder to get than they were three months ago? 12

During the last three months, was your firm able to satisfy its borrowing needs? 13

Do you expect to find it easier or harder to obtain your required financing during the next three months? 13

If you borrow money regularly (at least once every three months) as part of your business activity, how does the rate of interest payable on your most recent loan compare with that paid three months ago? 14

If you borrowed within the last three months for business purposes, and the loan maturity (pay back period) was 1 year or less, what interest rate did you pay? 14

During the last three months, did you increase or decrease your inventories? 15

At the present time, do you feel your inventories are too large, about right, or inadequate? 15

Looking ahead to the next three months to six months, do you expect, on balance, to add to your inventories, keep them about the same, or decrease them? 15

During the last six months, has your firm made any capital expenditures to improve or purchase equipment, buildings, or land? 16

If [your firm made any capital expenditures], what was the total cost of all these projects? 17

Looking ahead to the next three to six months, do you expect to make any capital expenditures for plant and/or physical equipment? 17

What is the single most important problem facing your business today? 18

Please classify your major business activity, using one of the categories of example below 19

How many employees do you have full and part-time, including yourself? 19

